

ENERGY

AVIATION



ENVIRONMENTAL



KINLEY
CONSTRUCTION
SINCE 1895



GOVERNMENT



RAILROAD



INTERNATIONAL

AVIATION *BULK STORAGE*

INDUSTRIAL WASTE SYSTEMS

H D P E **ENERGY**

TANK FARMS

COMPRESSED AIR FLUSHING

MIDSTREAM TERMINALS

ENVIRONMENTAL

SIGNAL SYSTEMS CRUDE-BY-RAIL

DIESEL FUELING PLATFORMS SAFETY

ETHANOL **GOVERNMENT**

HYDRANT FUELING SYSTEMS

B L E N D I N G VAPOR RECOVERY

TRACK PANS **RAILROAD**

JET FUEL REFINED PRODUCT

COMPRESSED NATURAL GAS

LACT UNITS WASTE WATER TREATMENT

INTERNATIONAL

WELCOME TO KINLEY CONSTRUCTION

For over 35 years, Kinley Construction Group has served as an industrial fueling contractor specializing in midstream terminals, hydrant fueling facilities, bulk storage facilities, diesel fueling platforms, industrial waste systems, and service and maintenance of rotary equipment throughout the United States and other parts of North America.

INTRODUCTION TO KINLEY

Kinley Construction is a nationally recognized General Contractor with a focused knowledge and working experience in the mechanical fueling industry. The area of construction focuses primarily on hydrocarbon products including crude oil, ethanol, LPG, NGL, condensate, jet fuel, diesel and gasoline.

The history of Kinley Construction goes back to the oil & gas industry over 100 years ago. In 1985, Kinley evolved into a specialized construction fueling contractor focusing on fueling systems for Airports, Federal Government Facilities, Fuel Pipeline Terminals, Railroad Facilities, and Crude Oil Loading and Unloading Terminals. Within Kinley today, there are experienced personnel that have self-performed and/or managed a variety of these projects throughout the country.

Kinley has also been a leader in Design/Build and Construction of hydrocarbon loading and offloading facilities in the United States dating back to 2003 with the beginning of Ethanol distribution by rail. Kinley has been involved in the design and construction of numerous turnkey projects throughout the United States and parts of Canada. The design work involves taking a project from the concept phase through the construction to the system startup. Kinley’s extensive knowledge in this industry gives these projects the best chance to succeed.

Overall, Kinley’s internal and external network of people are made up of some of the leading industry professionals. This special network of people allows Kinley to be the versatile, respectable and reliable company it is today.

We invite you to look through the following pages to get an idea of the projects Kinley has been a part of over the years.

OUR SERVICES

PROJECT PLANNING

- Pre-Construction
- Value Engineering
- Budgetary Proposals
- Design/Build
- Turnkey EPC Solutions

PROJECT EXECUTION

- Construction Management
- General Contracting
- Prime Contracting
- Subcontracting
- Self-Performing
- Commissioning / Startup

QUALIFICATIONS

- Licensed throughout the United States, Canada and other parts of North America
- Triple AAA Bonded
- ISNetwork Qualified
- DOT Operator Qualified (OQ)
- E-Railsafe Certified
- TWIC Qualified

OUR DIVISIONS

AVIATION

- Hydrant Fueling Systems
- Tank Farms
- Fuel Flushing

GOVERNMENT

- Type III, IV, V Hydrant Fueling Terminals
- Bulk Storage & Fuel Transfer Terminals

RAILROAD

- Diesel Fueling Platforms
- Bulk Storage Facilities
- Yard Air Systems
- Signal Systems

ENERGY

- Bulk Storage Terminals
- Railcar Loading & Offloading Terminals
- Gas & NGL Terminals

ENVIRONMENTAL

- Waste Water Treatment Plants
- Industrial Waste Systems
- HDPE Water Systems

INTERNATIONAL

- Blending Facilities
- Railcar Loading & Unloading Facilities
- Fuel Hydrant Systems



— BUILT ON —



KINSHIP

Care for our people as if they're family



INTEGRITY

Do the right things, the right way, for the right reasons



NEVER SETTLE

Relentlessly pursue improvement



LEGACY-DRIVEN

Create impact that lasts for generations



EXCELLENCE

Safely deliver exceptional experiences



YOU BEFORE ME

Build up others through servant leadership

OUR MISSION

We build exceptional relationships that drive growth and success for all.

OUR VISION

We will create and contribute to environments where co-workers, client, and communities can flourish for generations.

OUR SAFETY POLICY

The Kinley policy is to manage all operations in a manner that offers maximum protection to every employee, customer, contractor, the public, and the environment. Kinley is totally committed to safety and loss control, and it is our intention that each employee shall work under the safest conditions possible. We will maintain safe facilities, workplace and equipment that are free from recognized and potential hazards.

Through employee training, updating of our safety program, regular onsite safety audits by our corporate safety team and constant vigilance, we strive to provide the safest work environment possible for everyone involved with each and every project.

OUR CULTURE

For over 100 years, Kinley's Culture has been derived from the loyalty, experience and capabilities of the personnel working within the company. This culture continues to be the cornerstone in the continued success of the company, and the satisfaction of our clients.



Early 1900's

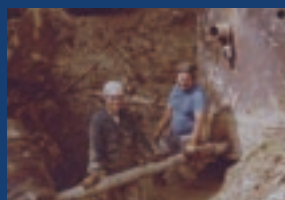
For six generations, Kinley has been a family-owned and operated business. Adam Kinley started the first Kinley Company in the mid – 1800's by operating tanneries and harvesting timber throughout western New York. Towards the late 1800's, oil was discovered in this western New York and northern Pennsylvania region, which led the Kinley's to venture into the oil business – incorporating Kinley Oil Company in 1909.



*“...incorporating
Kinley Oil
Company in
1909.”*

“...next generation of Kinley businesses.”

Starting in 1909, Kinley Oil Company continued the production of oil and gas for the next 80 years. By the early 1980's, James H. Kinley and his son J.L. Kinley realized the oil fields in this area were becoming depleted. For the first time in company history the father and son duo decided it was time to discontinue these oil & gas operations, which began an expansion era that would spawn the next generation of Kinley businesses.



1970's - 1980's

Throughout the late 1970's and early 1980's, J.L. Kinley went on to establish operations in Oklahoma and Texas operating oil & gas wells. At the same time, in Bellevue, Nebraska, James H. and J.L. Kinley purchased an existing fuel terminal, which supplied jet fuel to Offutt Air Force Base. This opportunity led to J.L. Kinley constructing, owning and managing other fuel terminals located in Idaho, California and North Dakota. These early projects and construction crews were to become extremely vital to Kinley's future plans, which eventually led to the creation of Kinley Construction.



*“...led to the creation
of Kinley Construction”*

OUR HISTORY

*For over 100 years, Kinley has been involved in the
Oil & Gas industry dating back to 1909.*

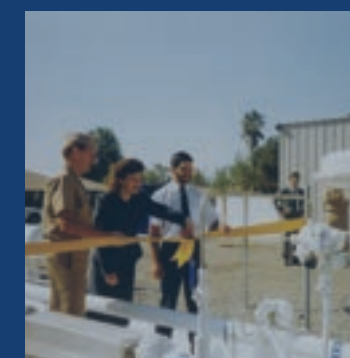
Late 1980's



In the late 1980's, J.L. Kinley incorporated Kinley Construction Company with headquarters in Arlington, Texas. The first employees of the company came from the construction of the fuel terminals, as well as personnel from Kinley Oil Company from western New York. Many of these first employees still work and manage the company today. The first projects for Kinley Construction Company included fuel terminal projects for the private sector, as well as for the United States Department of Defense.



“Over 35 years of employment.”



1990's - Today

Throughout the 1990's, Kinley Construction Company continued to expand its range of construction capabilities, opening up opportunities to work in the airport, energy and railroad industries. In the year 2000, Kinley Construction Company transitioned into Kinley Construction Group, which is the name the company holds today. Since this transition, the company has grown to be one of the more diverse and qualified industrial fueling general contractors. In 2008, the company began completing projects outside of the United States. Most recently, Kinley has opened up operations in Canada under the name, “Kinley Construction of Canada, Inc.”

“Building relationships for over 100 years.”



AVIATION

DIVISION



AVIATION



AVIATION DIVISION

Kinley Construction Group has consistently established itself as a leader in construction of large aviation fueling projects throughout the Continental U. S. & the Caribbean Islands for over two decades. Kinley has the experience of successful completion of projects that provided seamless and uninterrupted Aviation Fuel Tank Farm and Aviation Hydrant Piping modifications at some of the busiest airports in the world.

Kinley Construction Group’s reputation in the Aviation Industry has been proven through the years by the successful completion of Aviation Hydrant Fueling, Tank Farm, and Fuel Flushing projects. Kinley continues to lead the field through years of experience, and the dedication to outperform the competition by holding Safety, Quality and Performance to their highest standard.

For more information, please visit www.KinleyConstruction.com

TABLE OF CONTENTS

Hydrant Fueling Systems

IAH - Houston, TX.....	1-2
IAH - Houston, TX.....	3-4
ATL - Atlanta, GA.....	5-6
ATL - Atlanta, GA.....	7-8
RSW - Ft. Myers, FL.....	9
PAE - Everett, WA.....	9
IAD - Dulles, D.C.....	10
IND - Indianapolis, IN.....	10

Tank Farm

DFW - Dallas, TX.....	11-12
TPA - Tampa, FL.....	13
OKC - Oklahoma City, OK.....	14
RAL - Riverside, CA.....	14

Fuel Flushing

ATL - Atlanta, GA.....	15
TPA - Tampa, FL.....	15
PCA - Port Canaveral, FL.....	16
IAH - Houston, TX.....	16

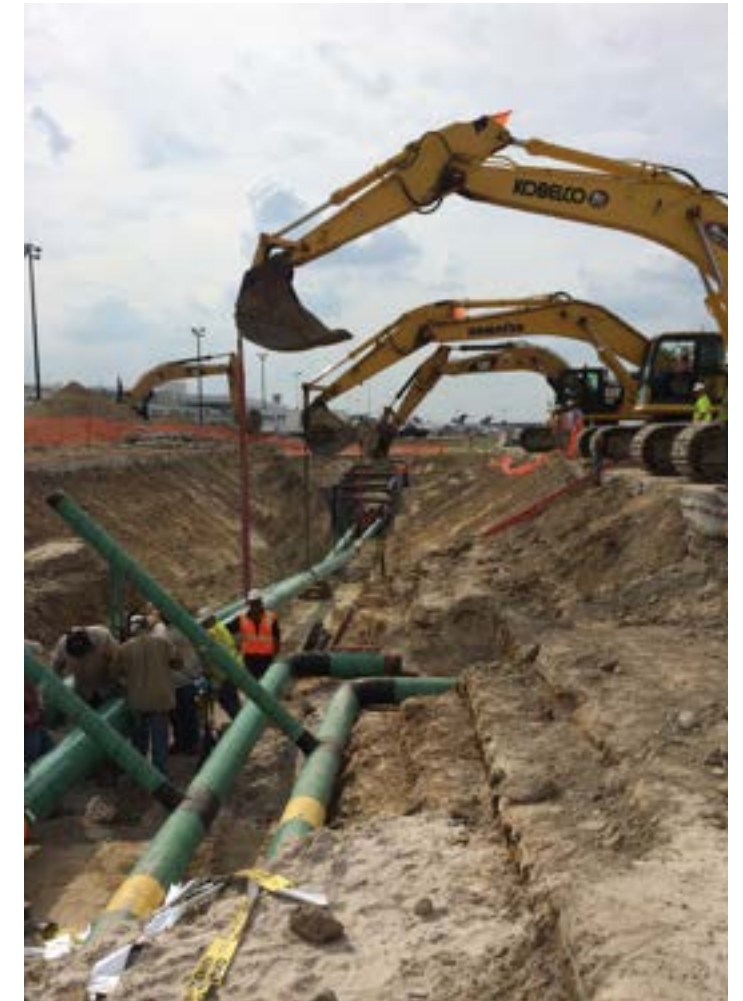


HYDRANT FUELING SYSTEMS



IAH - HOUSTON, TX

Relocate 16" fuel mains to allow for a bypass of the main fuel lines during construction of the Terminal B North. All Bypass piping was executed under an accelerated schedule to keep the Terminal Construction within MCC/UAL committed schedule duration. Work also included the installation of 4 ea. Concrete Fuel Vaults and 36 ea. hydrant pits with associated 16" and 12" fuel mains for the new Terminal B North.



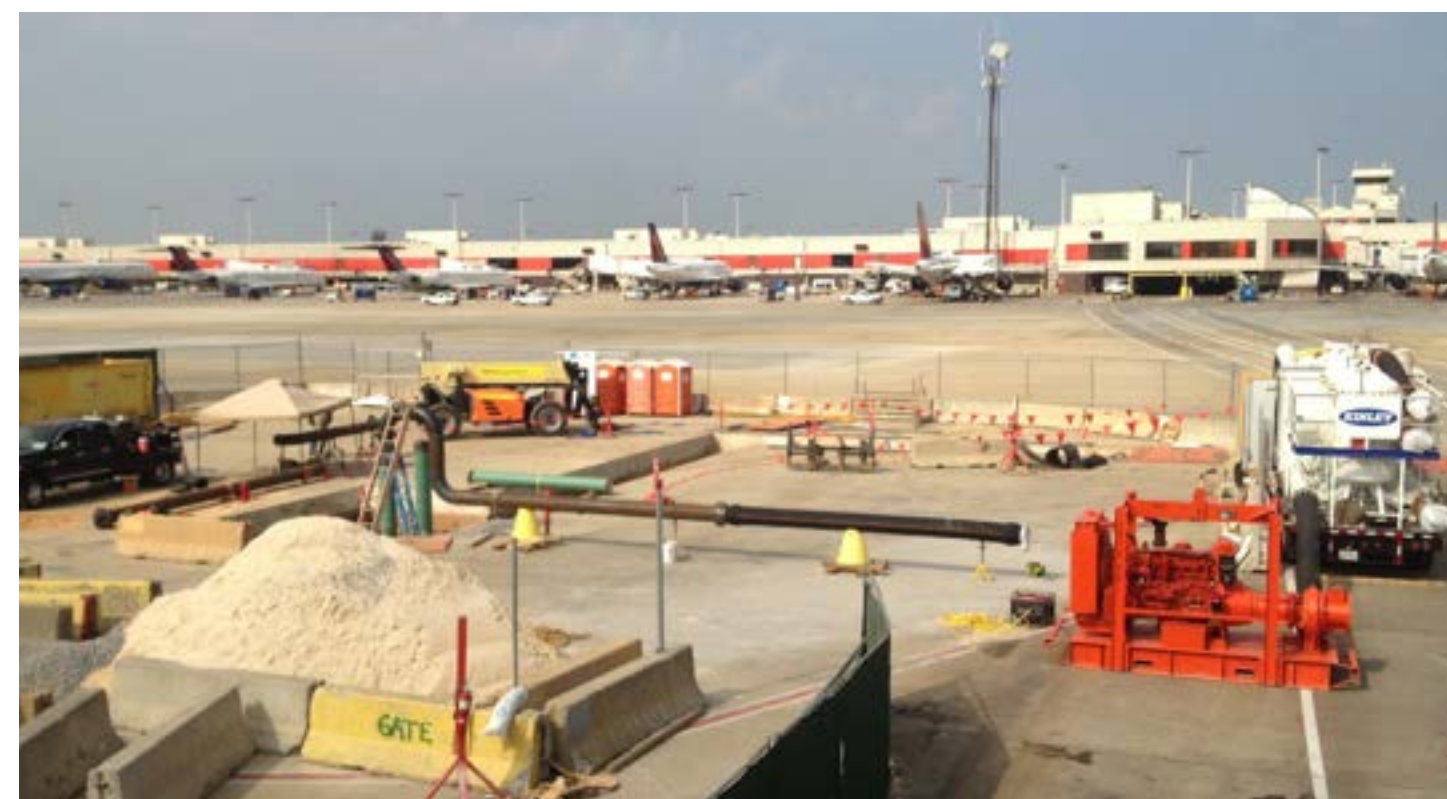
IAH - HOUSTON, TX

Install of over 60,000 LF (Linear Feet) of 16", 12" and 6" hydrant fueling pipeline. Included install of 165 hydrant pits and three (3) concrete isolation valve pits. Project's included final tie-ins to existing fuel system after testing and fuel flushing of over 10 million gallons of filtered fuel.



ATL - ATLANTA, GA

Concourse C Expansion consisted of relocating the 14" main fuel lines and 6" lateral lines to existing fuel hydrant pits. All tie-ins, testing and fuel flushing was completed during nighttime shut downs allowing uninterrupted fueling to aircraft.



ATL - ATLANTA, GA //////////////////////////////////////

Installed 20" x 24" Double-wall piping to allow for the construction of the Automated People Mover (APM) Tunnel, which connected to the new International Terminal.



RSW - FT. MYERS, FL //////////////////////////////////////

40,800 LF of 12" x 16" double-wall piping, with three (3) new 3600 GPM pumps, 34 hydrant pits, new concrete control vaults and two (2) new truck loading islands.



PAE - EVERETT, WA //////////////////////////////////////

Install and commission of new fuel hydrant system, which included double-wall main and lateral piping for three (3) fueling positions at the Boeing Dream Lifter Operations Center.



IAD - DULLES, DC //////////////////////////////////////



IND - INDIANAPOLIS, IN //////////////////////////////////////



HYDRANT FUELING SYSTEMS

TANK FARMS



DFW - DALLAS, TX

Work included the install of a new fueling system for Terminal D and increasing the overall fuel capacity with new tank storage. Our scope also included the install of 67 hydrant fueling pits, 3200 LF of 14" loop piping and hot-tapping into existing system.



TPA - TAMPA, FL

Work included modifying and replacing existing tank bottoms, as well as installing new liner and fire protection.



RAL - RIVERSIDE, CA

Included the construction of a bulk fuel storage facility with two (2) Jet A storage tanks, loading and unloading positions, control building for fuel lab, and an electrical pump control room.



OKC - OKLAHOMA CITY, OK

New fuel farm including three (3) 10,000 BBL tanks, full automation, truck loading and unloading facility with new pumps, pipe and equipment.



FUEL FLUSHING

ATL - ATLANTA, GA



TPA - TAMPA, FL



PCA - PORT CANAVERAL, FL



IAH - HOUSTON, TX







ENERGY DIVISION

Kinley Construction Group’s experience in the Energy Division dates back to 1993 with the upgrade to an existing facility for AMOCO Oil. Kinley’s Design/Build and Construction focus continues in the midstream sector, which includes numerous turnkey projects for railcar loading and unloading terminals, bulk storage and fuel transfer terminals, as well as ethanol and gasoline blending facilities. Kinley’s expertise is focused primarily on hydrocarbon products including crude oil, ethanol, LPG, NGL, condensate, jet fuel, diesel and gasoline.

For more information, please visit www.KinleyConstruction.com

TABLE OF CONTENTS

Bulk Storage

Crude Oil

Plains - Johnson Corner, ND.....1-2

Refined Oil

Flint Hills - Austin, TX.....3-4

Chemicals, Solvents and Lubricants

Buckley Oil – Mineral Wells, TX and Midlothian, TX.....5-6

Railcar Loading and Unloading Terminals

Hot Wax Crude Oil

Kinder Morgan Watco – Greensport, TX.....7-8

Sunoco Logistics – Price River, UT.....9-10

Crude Oil

Plains – Carr, CO.....11-12

US Development – Van Hook, ND and St. James, LA.....13-14

Refined Product and Blending

Greenergy – Concord, ON, Canada.....15-16

Ethanol

US Development – Arlington, TX and San Antonio, TX.....17-18

Gas and NGL Terminals

Natural Gas

Crosstex – Benbrook, TX.....19

Chief Energy – Williamsport, PA.....20

Propane

American Midstream – Longview, TX.....20

BULK STORAGE



CRUDE OIL



PLAINS - JOHNSON CORNER, ND

This crude oil terminal project consisted of two (2) 250,000 BBL tanks, six (6) LACT units, above and belowground piping, 150 tons of steel pipe supports, two (2) meter skids and six (6) truck unloading positions. Subcontracted scope included all electrical and integration work.



FLINT HILLS - AUSTIN, TX



REFINED PRODUCT



BULK STORAGE

BUCKLEY OIL - MIDLOTHIAN, TX



CHEMICALS, SOLVENTS



BUCKLEY OIL - MINERAL WELLS, TX



AND LUBRICANTS



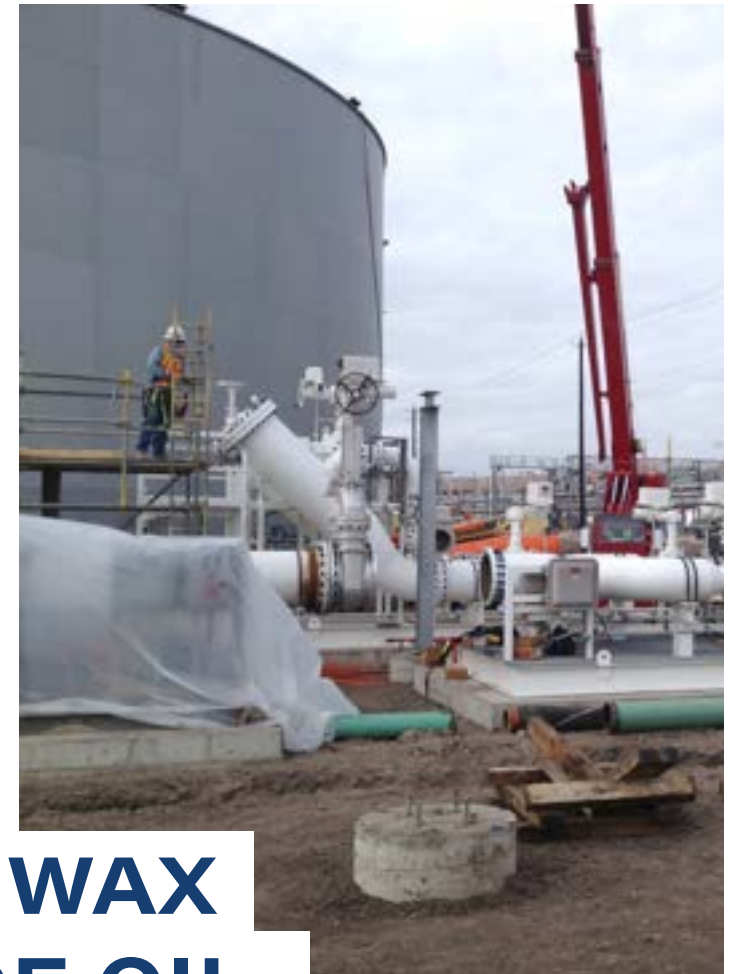
BULK STORAGE

RAILCAR LOADING & UNLOADING TERMINALS



KWX - GREENSPORT, TX

Installation of seventy (70) loading and unloading spots for hot wax crude oil transported by rail. Other work included new fire water system, eight (8) centrifugal pumps, new tank farm pumps and all piping 1" thru 36", two (2) meter skids, prover skid and five (5) vertical can pumps.

HOT WAX
CRUDE OIL

SUNOCO LOGISTICS - PRICE RIVER, UT //

Hot Wax Crude-by-Rail loading terminal with 80,000 BBL of insulated storage and insulated transfer piping. Also included five (5) truck unloading LACTs, and nine (9) spot rail car loading rack, as well as an electrical building and a vapor recovery combustion system.



HOT WAX CRUDE OIL



CRUDE OIL

PLAINS - CARR, CO

This project consisted of building a new twenty-six (26) railcar loading facility covered by a 60' x 800' canopy with foam fire protection. The mechanical work included 12,000 LF of 12" transfer piping, and 30" loading manifold, four (4) 300 HP centrifugal pumps, two (2) meter skids and an eight (8) spot truck offloading area.

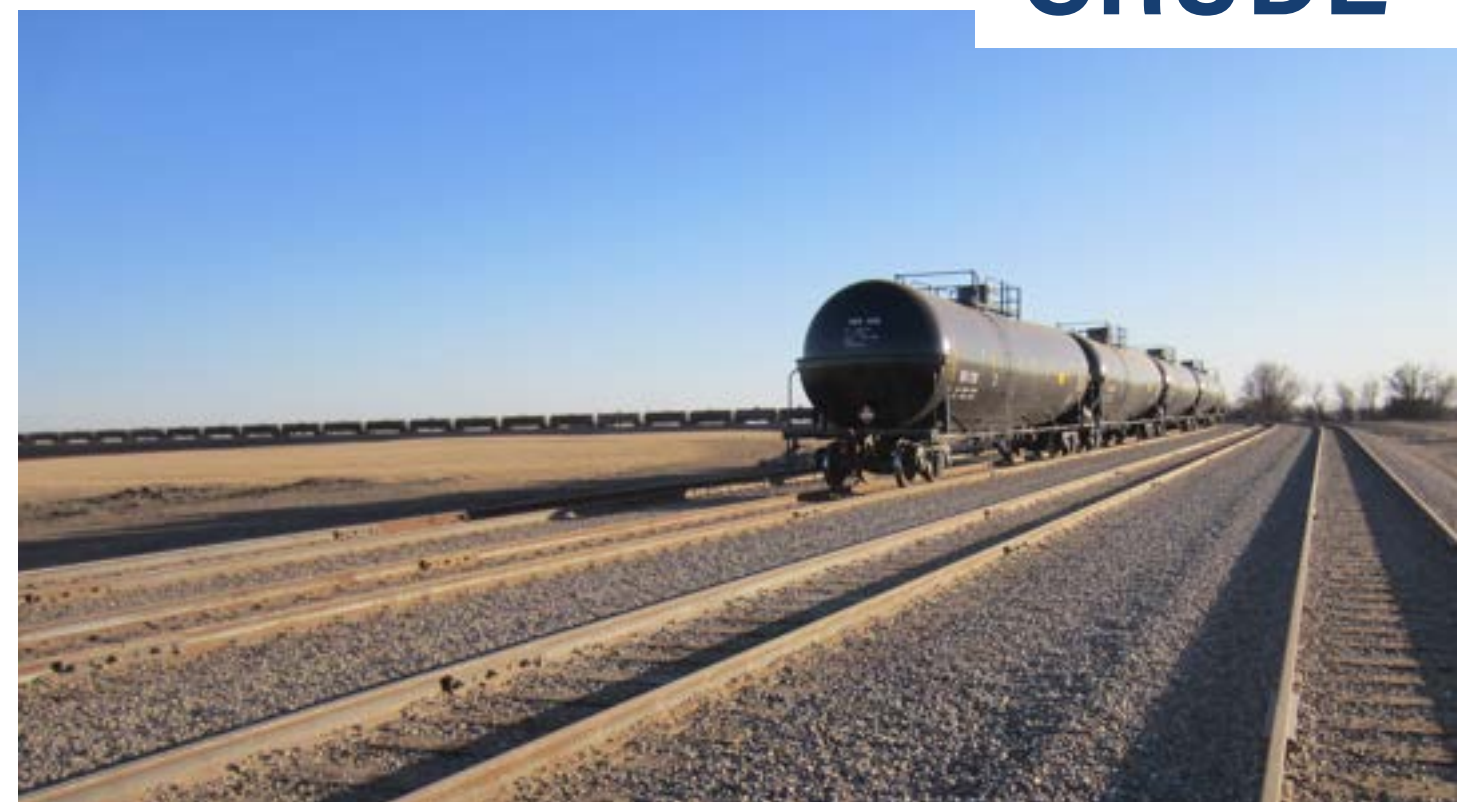


RAILCAR LOADING/UNLOADING TERMINALS

USD - VAN HOOK, ND



CRUDE



USD - ST. JAMES, LA

A multi-phase Crude-by-rail unloading facility capable of offloading three (3) unit trains per day. Includes 120 total unloading spots, over one (1) mile of piping to bulk storage, with six (6) 800 HP vertical turbine pumps.



OIL



RAILCAR LOADING/UNLOADING TERMINALS

GREENERGY - CONCORD, ON, CANADA //////////////////////////////////////

16-spot Gasoline and Diesel railcar unload, and 8-spot Ethanol Railcar unload. Includes multi truck loadout spots for gasoline with ethanol mix and additive injection, as well as diesel and premium gasoline loadout with full vapor recovery system.



**REFINED PRODUCT
AND BLENDING**

RAILCAR LOADING/UNLOADING TERMINALS

USD - ARLINGTON, TX



ETHANOL



USD - SAN ANTONIO, TX



ETHANOL



GAS AND NGL TERMINALS

CROSSTEX – BENBROOK, TX



NATURAL GAS



CHIEF ENERGY – WILLIAMSPORT, PA



NATURAL GAS



AMERICAN MIDSTREAM- LONGVIEW, TX



PROPANE



**GOVERNMENT
DIVISION**

**G
O
V
E
R
N
M
E
N
T**



HYDRANT FUEL SYSTEMS

FORT HOOD - KILLEEN, TX



WESTOVER AFB - WESTOVER, MA



EDWARDS AFB - EDWARDS, CA

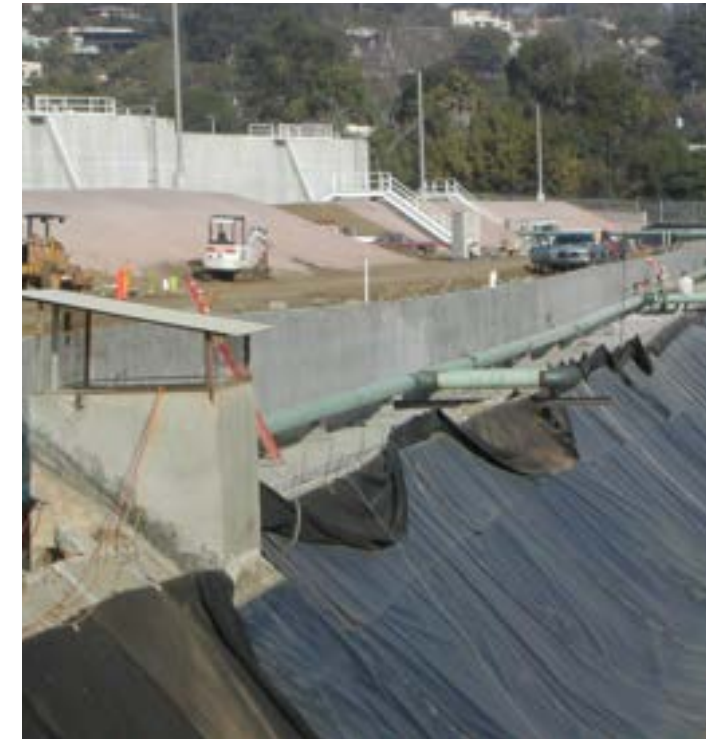


BULK STORAGE AND FUEL TRANSFER



NAVY YARD - POINT LOMA, CA //////////////////////////////////////

Work consisted of removing and abandoning existing pipe to 17 storage tanks. New work included install of 8,000 lf of 16" and 7,200 LF of 4" above ground piping from two (2) pump houses to existing storage tanks. Work also included underground install of 2,500 LF of 32" casing carrying 16" and 4" piping.



MCGUIRE AFB - WRIGHTSTOWN, NJ



TRAVIS AFB - TRAVIS, CA



FORT RILEY - FORT RILEY, KS



KIRTLAND AFB - ALBUQUERQUE, NM



BULK STORAGE AND FUEL TRANSFER

**ENVIRONMENTAL
DIVISION**

**E
N
V
I
R
O
N
M
E
N
T
A
L**





ENVIRONMENTAL DIVISION

Kinley’s Environmental Division has completed numerous Industrial Waste systems and spill containment projects throughout the United States and Canada. These projects include new construction and rehabilitation of track pan collection and conveyance systems, HDPE underground piping systems, lift stations and manholes.

In addition to this work, Kinley has also supplied and installed Industrial Waste Water Treatment Plants, Oil / Water Separators and DAF Units. Kinley’s HDPE piping experience also includes underground water systems for irrigation, erosion control and fire suppression.

For more information, please visit www.KinleyConstruction.com

TABLE OF CONTENTS

Industrial Waste Systems	
BNSF - Belen, NM.....	1-2
BNSF - Barstow, CA.....	3-4
BNSF - Seattle, WA.....	5
BNSF - Denver, CO.....	6
Waste Water Treatment	
BNSF - Havre, MT.....	7-8
BNSF - Kansas City, KS.....	9
BNSF - Vancouver, WA.....	10
BNSF - Temple, TX.....	10
HDPE Water Services	
UPRR - Kelso, CA.....	11
UPRR - Lizard, NM.....	12



INDUSTRIAL WASTE SYSTEMS



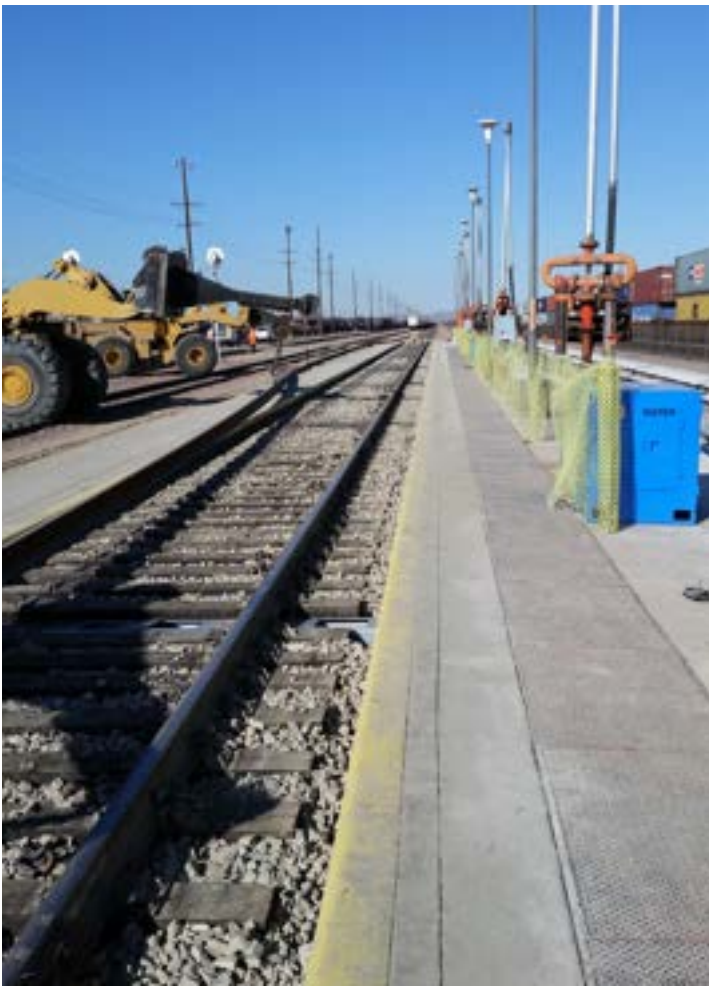
BNSF - BELEN, NM //////////////////////////////////////

Demo and replace four (4) mainline fueling tracks within two (2) - 72 hour shutdown windows. Work also included installation of industrial waste piping and trackpan system.



BNSF - BARSTOW, CA //////////////////////////////////////

Demo and replace over 1,000 LF of mainline fueling track. Includes new industrial piping and manholes, new concrete apron with edge angle and new track pan system.

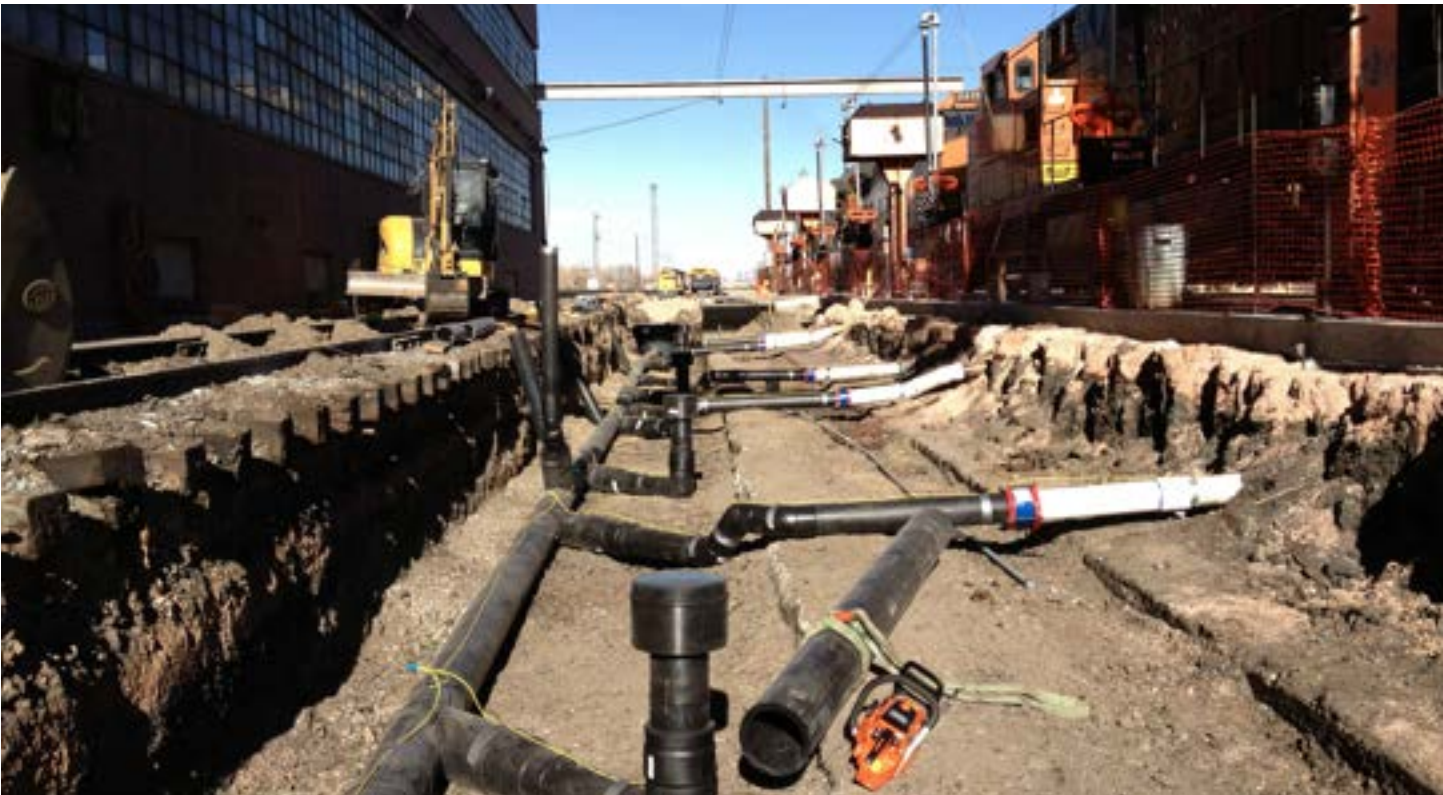


BNSF- SEATTLE, WA



INDUSTRIAL WASTE SYSTEMS

BNSF - DENVER, CO



WASTE WATER TREATMENT PLANTS



BNSF - HAVRE, MT //////////////////////////////////////



BNSF - KANSAS CITY, KS



BNSF - VANCOUVER, WA



BNSF - TEMPLE, TX



HDPE WATER SERVICES

UPRR - KELSO, CA

Installed 12 miles of 8" underground HDPE Water Main to supply well water to new irrigation system also installed by Kinley. New irrigation system consisted of 10 miles of 4" HDPE piping, 20 control valve stations, 1600 sprinkler head risers, and electrical power / control wiring.



UPRR - LIZARD, NM



RAILROAD
DIVISION



R
A
I
L
R
O
A
D



RAILROAD DIVISION

Kinley Construction Group has been involved in the construction of large railroad projects for the last 25 years. In that time frame, the company has successfully completed over 450 Railroad projects. These projects include Fueling Systems, Fuel Offloading and Loading Facilities, DFO pipelines, Truck and Rail Automated systems, Lead Detection Systems, Vapor Recovery Systems, Oil Waste Water Treatment Facilities, Tank Storage Complexes, PLC Terminal Automation, Fuel Flow Control Systems, Emergency Shutdown Systems, Maintenance Buildings, Storm Sewer Systems, Compressed Air Systems, Spill Containment Liners and Track Pans, Soil Remediation as well as TPC Signal Systems.

For more information, please visit www.KinleyConstruction.com

TABLE OF CONTENTS

Diesel Fueling Platforms

BNSF - Belen, NM.....1

UPRR - Colton, CA.....2

UPRR - Little Rock, AR and NS - Macon, GA.....3

BNSF - Barstow, CA.....4

BNSF - Kansas City, KS.....5

CP - Davenport, LA.....6

Bulk Storage

UPRR - Elko, NV.....7

BNSF - Belen, NM.....8

BNSF - Donkey Creek, WY.....9

BNSF - Lincoln, NE and UPRR - Denison, TX.....10

BNSF - Belen, NM.....11

UPRR - Roseville, CA and San Antonio, TX.....12

Yard Air Systems

BNSF - Everett, WA and Galesburg, IL.....13

BNSF - Havre, MT and NS - Lynchburg, VA.....14

Signal Systems

BNSF - Barstow, CA and Galesburg, IL.....15

BNSF - Kansas City, KS and Memphis, TN.....16



DIESEL FUELING PLATFORMS

BNSF - BELEN, NM

Replacement of existing fueling platform, which included new underground utilities, industrial waste system and new double-wall piping for lube oil and diesel fuel. Work also included new concrete platform, trackpans and new Snyder Lube Oil and fuel cranes.



UPRR - COLTON, CA

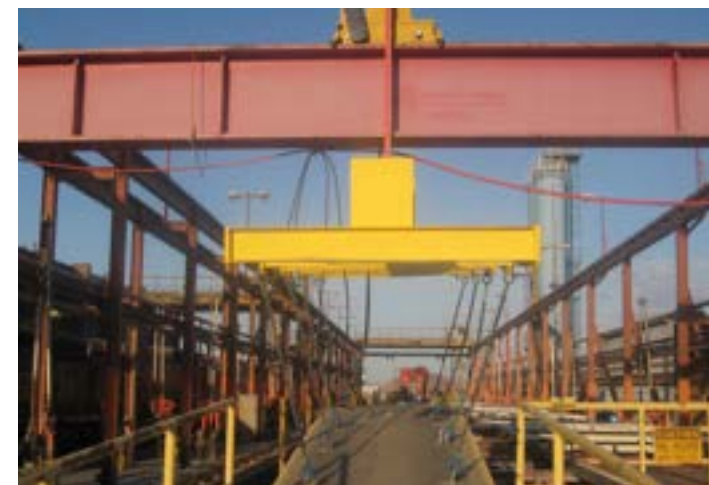
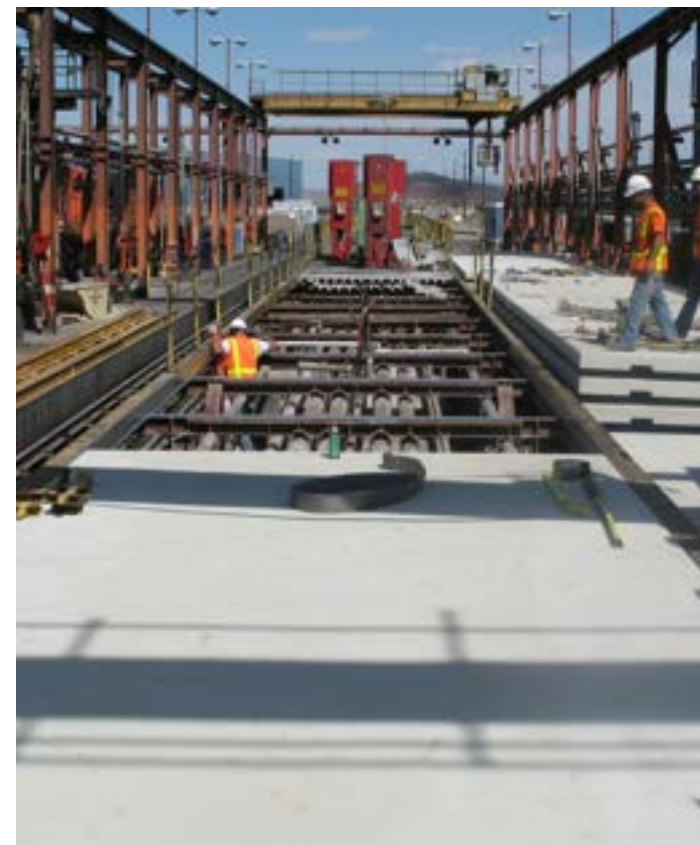


UPRR - LITTLE ROCK, AR

Demolition of existing mainline fueling platform and construction of new fueling platform. Work included new fueling piping, electric, lube oil and water dispensing system.

**BNSF - BARSTOW, CA**

Replacement of Precast Concrete Platform. Including refurbish of structural steel members. Also included replacement of Lube Oil and Water piping and insulation

**NS - MACON, GA**

BNSF - KANSAS CITY, KS

[illegible]

Demolition and remediation of the existing service platform (fueling, lube oil, sand tower, industrial waste system.) Installation of new concrete fueling platform with pipe trench, lift station, new truck off-loading pump house and dispensing pump house.



BNSF – KANSAS CITY, KS //////////////////////////////////////

Multi-phase project installing diesel fuel mainline from day tanks to railcar fueling platform. Included approximately 10,000 LF of 8" x 12" double-wall pipe.



BULK STORAGE

UPRR - ELKO, NV

Two (2) new fueling tanks, concrete containment dikes with associated piping and equipment. Work also included new tank car offloading facility.



BNSF - BELEN, NM



Installed two (2) 270,000 gallon DFO tanks and concrete tank farms, along with a HDPE lined mpound barin. Additional work included new diesel fuel piping to existing platform, as well as electrical wiring for new devices and controls.



BNSF - LINCOLN, NE



UPRR - DENISON, TX



BNSF - BELEN, NM



UPRR - ROSEVILLE, CA



UPRR - SAN ANTONIO, TX



YARD AIR SYSTEMS

BNSF - EVERETT, WA



BNSF - GALESBURG, IL



BNSF - HAVRE, MT



NS - LYNCHBURG, VA

Work included installation of new HDPE high pressure air system, compressors and tanks to operate railroad switch machines, retarders and general use yard air.



SIGNAL SYSTEMS

BNSF - BARSTOW, CA

New fiber optic and signal control system for management of hump terminal processing over 1800 freight cars per day. Installation consisted of over 5 miles of signal cable and over 15,000 cable terminations.



BNSF - KANSAS CITY, KS



BNSF - GALESBURG, IL



BNSF - MEMPHIS, TN



**INTERNATIONAL
DIVISION**



**I
N
T
E
R
N
A
T
I
O
N
A
L**

INTERNATIONAL DIVISION

For over three decades, Kinley Construction Group has been a preferred contractor for large fueling projects across the United States. In 2008, Kinley was given the opportunity to take these services outside the United States and into other parts of North America. Upon invitation from clients and engineers abroad, Kinley completed their first international project consisting of a new hydrant fueling system at the Montego Bay International Airport. Three years later, Kinley was invited back to the other side of the island to complete the hydrant fueling upgrades at the International Airport in Kingston, Jamaica. Kinley has since expanded the company and its resources north of the border into Canada, establishing a new business entity, Kinley Construction of Canada, Inc.



TABLE OF CONTENTS //////////////////////////////////////

Greenergy – Vaughan, ON, Canada.....1-2

CST Ultramar – Lindsay, ON, Canada.....3

Imperial Oil – Concord, ON, Canada.....4

Hardisty, Canada.....5

Montego Bay, Jamaica.....6

Kingston, Jamaica.....6

GREENERGY - VAUGHAN, ON, CANADA //////////////////////////////////////

16-spot Gasoline and Diesel railcar unload, and 8-spot Ethanol Railcar unload. Includes multi truck loadout spots for Gasoline with ethanol mix and additive injection, as well as Diesel and Premium Gasoline loadout with full vapor recovery system.



CST ULTRAMAR – LINDSAY, ON, CANADA

Turnkey project for upgrading existing oil facilities to allow the client the ability to supply dyed diesel oil and new premium gas.



IMPERIAL OIL – CONCORD, ON, CANADA

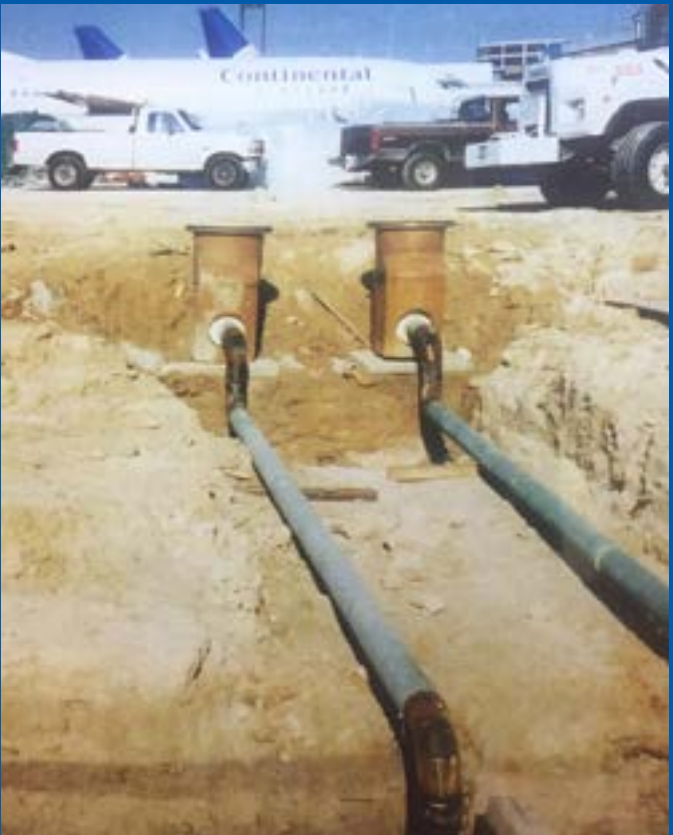
Installation of a new diesel additive storage and receipt system that includes Offloading line, Pump skid, Storage tank, injector panels and ten (10) injection points at loading racks 2,4,7 and 8. Finch terminal is one the busiest terminals in Ontario with excess of 200 trucks per day making the overall installation of piping and equipment challenging to not disrupt clients' day to day. operations and minimizing downtime.



HARDISTY - CANADA



MONTEGO BAY - JAMAICA



KINGSTON - JAMAICA



KINLEY
CONSTRUCTION

SINCE 1909



CONTACT US

7301 E. Commercial Blvd.
Arlington, Texas 76001

817.461.2100

www.kinleyconstruction.com

AVIATION *BULK STORAGE*
INDUSTRIAL WASTE SYSTEMS
H D P E **ENERGY**
TANK FARMS
COMPRESSED AIR FLUSHING
MIDSTREAM TERMINALS
ENVIRONMENTAL
SIGNAL SYSTEMS CRUDE-BY-RAIL
DIESEL FUELING PLATFORMS SAFETY
ETHANOL **GOVERNMENT**
HYDRANT FUELING SYSTEMS
B L E N D I N G *VAPOR RECOVERY*
TRACK PANS **RAILROAD**
JET FUEL *REFINED PRODUCT*
COMPRESSED NATURAL GAS
LACT UNITS WASTE WATER TREATMENT
INTERNATIONAL

KINLEY CONSTRUCTION



**7301 E. COMMERCIAL BLVD.
ARLINGTON, TEXAS 76001
817.461.2100
WWW.KINLEYCONSTRUCTION.COM**

BUILT ON RELATIONSHIPS SINCE 1895.